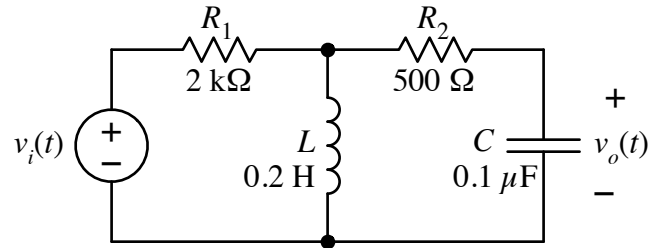


For the second-order filter circuit shown at right, calculate the transfer function (in symbols). (Yes, it is a bit messy.) What type of filter is it?

For the component values given, calculate  $f_o$ ,  $Q_P$ ,  $G_o$ , and the bandwidth (in Hz). (Oops, there's a clue in there.)



$T(s) =$  \_\_\_\_\_

type: \_\_\_\_\_

$f_o =$  \_\_\_\_\_ ;  $Q_P =$  \_\_\_\_\_ ;  $G_o =$  \_\_\_\_\_ ; BW = \_\_\_\_\_