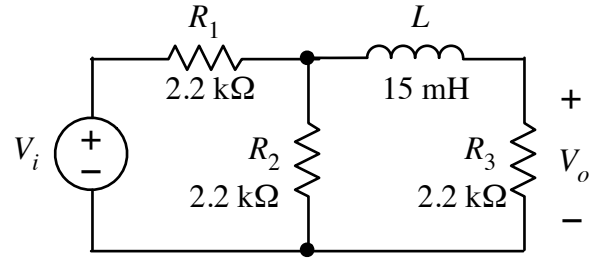


Find the transfer function for the filter circuit shown. Is it low-pass, high-pass, or band-pass? Calculate the corner frequency ( $f_c$  not  $\omega_c$ ) and the passband gain  $G_o$ .



$T(s) =$  \_\_\_\_\_

type: \_\_\_\_\_

$f_c =$  \_\_\_\_\_

$G_o =$  \_\_\_\_\_